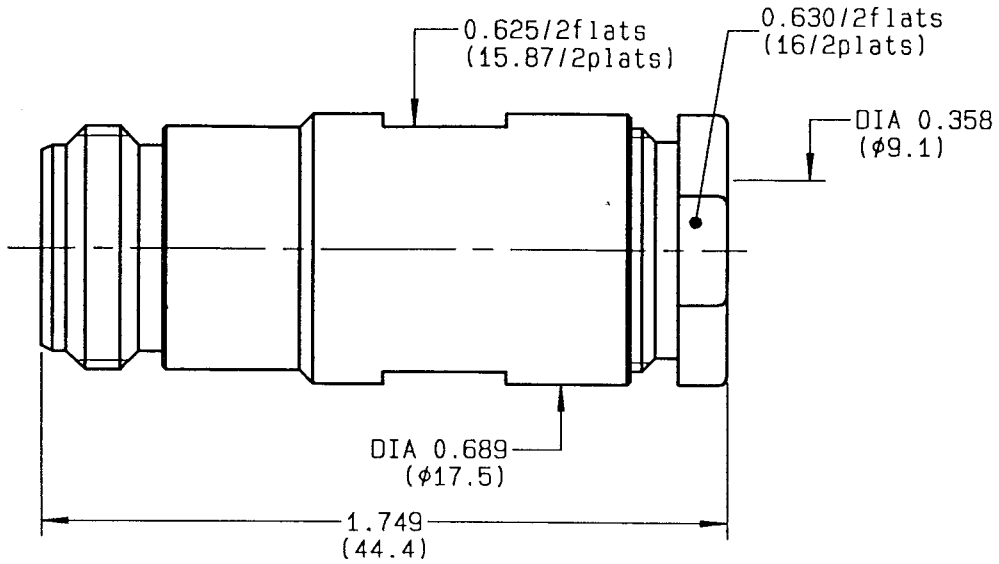


**STRAIGHT JACK CLAMP TYPE
CABLE 8/75 D**

R162.213.000
SERIES N 75



NOMINAL IMPEDANCE	75 Ω	CABLES : RG 6
FREQUENCY RANGE	0-1.5 GHz	
TEMPERATURE RATING	-55/+155 °C	
V.S.W.R	1.06 + x F(GHz)Maxi	
RF INSERTION LOSS	0.15 √F(GHz) dB Maxi	
VOLTAGE RATING	350 Veff Maxi	
DIELECTRIC WITHSTANDING VOLTAGE	1500 Veff Mini	
INSULATION RESISTANCE	5000 MΩMini	OTHERS CHARACTERISTICS
HERMETIC SEAL	NA Atm.cm ³ /s	CABLE RETENTION
LEAKAGE (pressurized only)	NA	200 N Mini
MECHANICAL DURABILITY	500 Cycles	CENTER CONTACT RETENTION
WEIGHT	gr	Axial force - mating end
SPECIFICATION		NA N Mini
		Axial force - opposite end
		NA N Mini
		Torque
		NA cm.N Mini
		RECOMMENDED TORQUES
		Mating
		NA cm.N
		Panel nut
		NA cm.N
		Clamp nut
		500 cm.N

CONNECTOR PARTS	MATERIALS	FINISH	(all values are given in micrometers)
BODY	BRASS	BBR 2	
OUTER CONTACT	BRASS	BBR 2	
CENTER CONTACT	BERYLLIUM COPPER	GOLD 0.5 OVER NICKEL 2	
INSULATOR	PTFE	-	
GASKET		-	
OTHERS PIECES	BRASS	BBR 2	

GAUT

ISSUE	CREATION DATE	FILE PART-NUMBER
9735C00	05-DEC-94	



RADIALL®

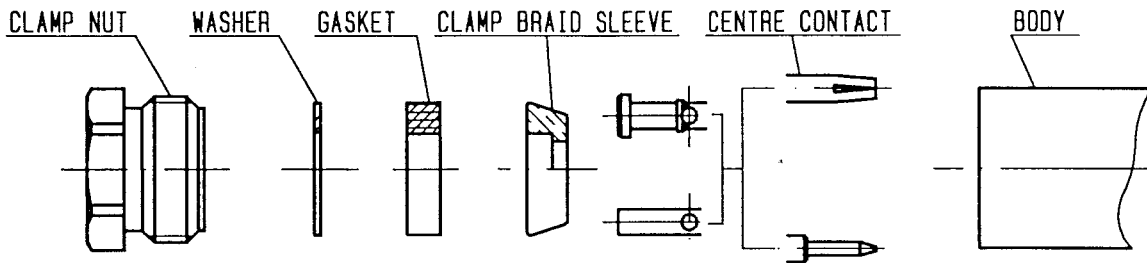
The information given here is subject to change without notice. Design changes may be in order to improve the product.

Connect to the future



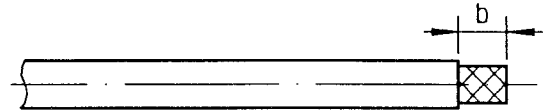
R162.213.000

ISSUE 9735C00 SERIES N 75



①

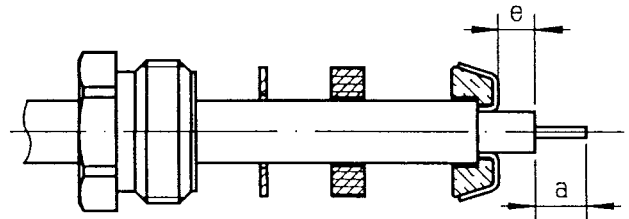
Strip the cable .
-
-
-



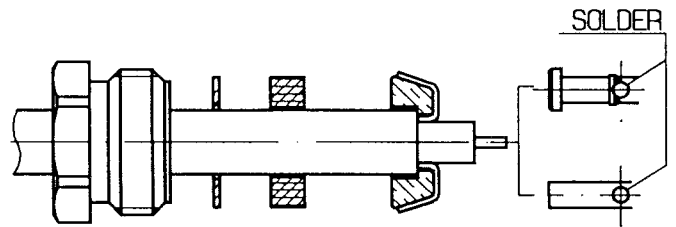
Stripping	a	b	c	d	e
inch	0.177	0.394	0	0	0.059
mm	4.5	10			1.5

②

Slide the clamp nut , the washer and the gasket onto the cable .
Slide clamp braid sleeve over braid .
Fold back braid and trim off surplus braid .
Trim back dielectric as shown .
-
-

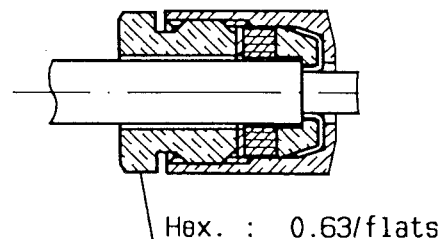


Solder the cable inner conductor into centre contact .
-
-
-



④

Screw sub-assembly into the connector body .
(recommended coupling torque 44.25 in.lb)
-
-



GAUTIER